

2021

NEW RIVER
MARKET REPORT
April 2021



Scottsdale Area Association of REALTORS®
8600 E Anderson Dr., Suite 200 Scottsdale, AZ 85255
ScottsdaleREALTORS.org
480-945-2651



Summary of Key Listing and Sales Metrics

A summary of the key metrics selected to be included in the report. MLS sources where licensed.

| Key Metrics | Apr 2021 | Apr 2020 | + / - | YTD 2021 | YTD 2020 | + / - |
|--|--------------|--------------|---------|--------------|--------------|--------|
| Listing Activity Charts Metrics | | | | | | |
| New Listing Count | 34 | 19 | +78.9% | 102 | 88 | +15.9% |
| New Listing Volume | \$18,267,239 | \$7,724,629 | +136.5% | \$52,856,514 | \$35,925,500 | +47.1% |
| Active Listing Count | 38 | 38 | +/- | N/A | N/A | |
| Active Listing Volume | \$22,992,089 | \$17,643,943 | +30.3% | N/A | N/A | |
| Average Listing Price | \$605,055 | \$464,314 | +30.3% | \$587,098 | \$459,639 | +27.7% |
| Median Listing Price | \$537,450 | \$427,000 | +25.9% | \$532,089 | \$440,379 | +20.8% |
| Average Listing Price per Sq Ft | \$268 | \$194 | +38.2% | \$252 | \$192 | +31.3% |
| Median Listing Price per Sq Ft | \$248 | \$197 | +25.6% | \$232 | \$194 | +19.9% |
| Median Days in RPR | 16.5 | 46.5 | -64.5% | 29.43 | 48.33 | -39.1% |
| Months of Inventory | 1.9 | 1.1 | +75% | 1.5 | 2.6 | -42% |
| Absorption Rate | 52.63% | 92.11% | -39.5% | 66.92% | 38.79% | +28.1% |
| Sales Activity Charts Metrics | | | | | | |
| New Pending Sales Count | 26 | 20 | +30% | 88 | 112 | -21.4% |
| New Pending Sales Volume | \$12,766,199 | \$7,634,479 | +67.2% | \$42,995,673 | \$43,182,427 | -0.4% |
| Pending Sales Count | 19 | 16 | +18.8% | N/A | N/A | |
| Pending Sales Volume | \$8,625,600 | \$6,097,489 | +41.5% | N/A | N/A | |
| Closed Sales Count | 22 | 19 | +15.8% | 74 | 87 | -14.9% |
| Closed Sales Volume | \$11,258,900 | \$7,632,060 | +47.5% | \$36,070,633 | \$33,642,345 | +7.2% |
| Average Sales Price | \$511,768 | \$401,687 | +27.4% | \$487,441 | \$386,694 | +26.1% |
| Median Sales Price | \$500,500 | \$385,000 | +30% | \$477,919 | \$379,776 | +25.8% |
| Average Sales Price per Sq Ft | \$214 | \$184 | +16.5% | \$220 | \$178 | +23.6% |
| Median Sales Price per Sq Ft | \$207 | \$189 | +9.5% | \$217 | \$179 | +21.1% |
| Distressed Charts Metrics | | | | | | |
| Distressed Listing Count | - | - | - | N/A | N/A | |

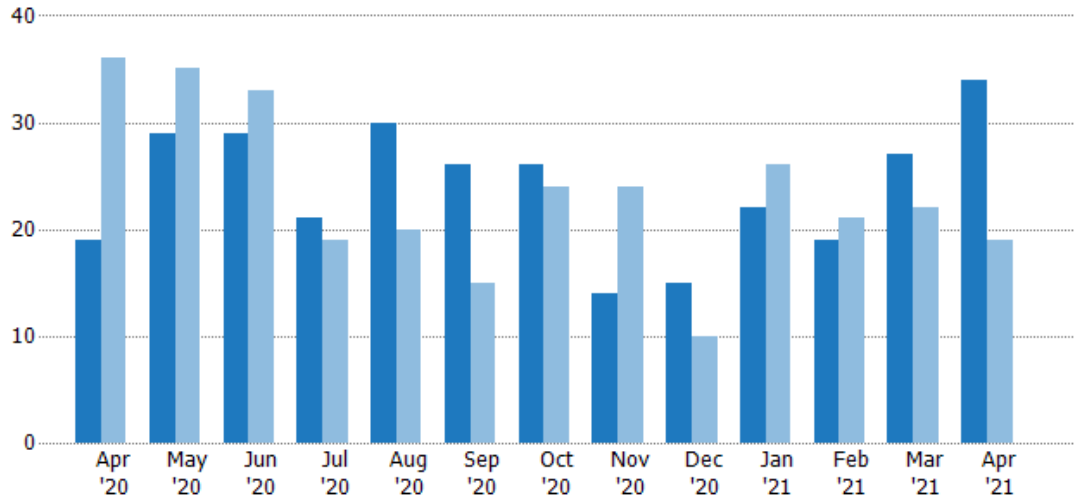
New Listings

The number of new residential listings that were added each month.

Filters Used

Custom Area: New River, Arizona
 Property Type:
 Condo/Townhouse/Apt.,
 Mobile/Manufactured, Single Family

| Month/Year | Count | % Chg. |
|------------|-------|--------|
| Apr '21 | 34 | 78.9% |
| Apr '20 | 19 | -47.2% |
| Apr '19 | 36 | 0% |



| | | | | | | | | | | | | | |
|--------------------------------|------|------|------|-----|-----|-----|----|------|-----|------|------|-----|-----|
| Current Year | 19 | 29 | 29 | 21 | 30 | 26 | 26 | 14 | 15 | 22 | 19 | 27 | 34 |
| Prior Year | 36 | 35 | 33 | 19 | 20 | 15 | 24 | 24 | 10 | 26 | 21 | 22 | 19 |
| Percent Change from Prior Year | -47% | -17% | -12% | 11% | 50% | 73% | 8% | -42% | 50% | -15% | -10% | 23% | 79% |

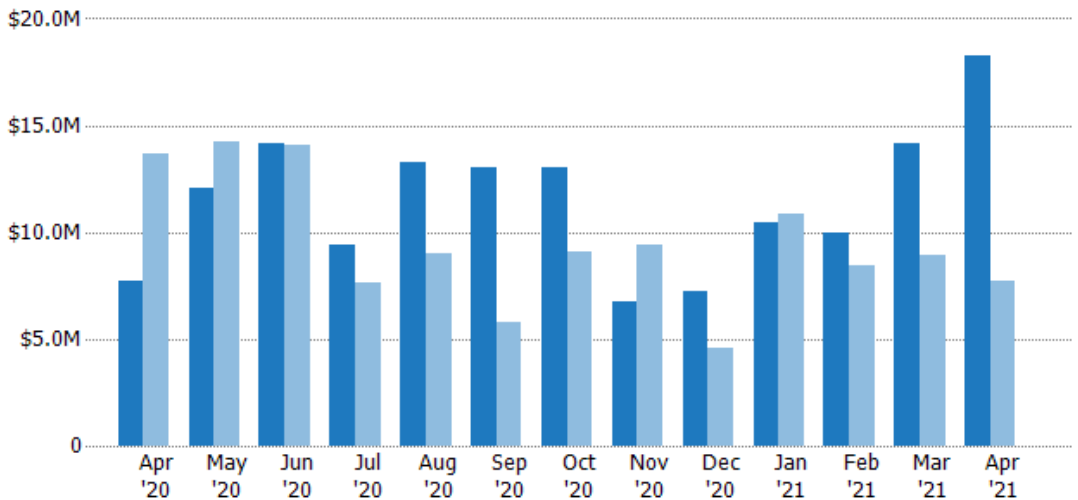
New Listing Volume

The sum of the listing price of residential listings that were added each month.

Filters Used

Custom Area: New River, Arizona
 Property Type:
 Condo/Townhouse/Apt.,
 Mobile/Manufactured, Single Family

| Month/Year | Volume | % Chg. |
|------------|---------|--------|
| Apr '21 | \$18.3M | 136.5% |
| Apr '20 | \$7.72M | -43.5% |
| Apr '19 | \$13.7M | 9.5% |



| | | | | | | | | | | | | | |
|--------------------------------|---------|---------|---------|---------|---------|---------|--------|---------|---------|---------|---------|---------|---------|
| Current Year | \$7.72M | \$12M | \$14.2M | \$9.38M | \$13.3M | \$13.1M | \$13M | \$6.75M | \$7.22M | \$10.4M | \$9.96M | \$14.2M | \$18.3M |
| Prior Year | \$13.7M | \$14.2M | \$14.1M | \$7.67M | \$9M | \$5.78M | \$9.1M | \$9.4M | \$4.56M | \$10.9M | \$8.42M | \$8.91M | \$7.72M |
| Percent Change from Prior Year | -43% | -15% | 1% | 22% | 48% | 126% | 43% | -28% | 58% | -4% | 18% | 59% | 136% |

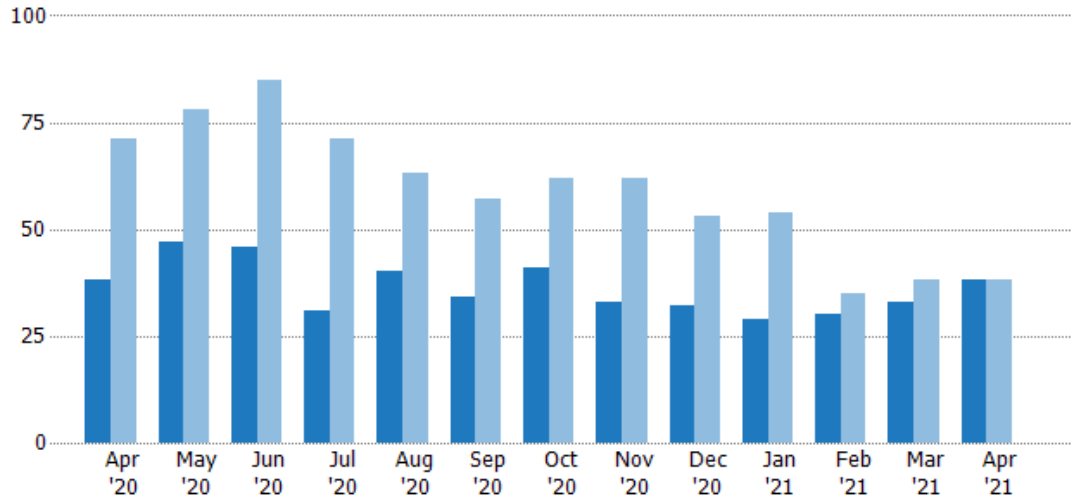
Active Listings

The number of active residential listings at the end of each month.

Filters Used

Custom Area: New River, Arizona
 Property Type:
 Condo/Townhouse/Apt.,
 Mobile/Manufactured, Single Family

| Month/Year | Count | % Chg. |
|------------|-------|--------|
| Apr '21 | 38 | 0% |
| Apr '20 | 38 | -46.5% |
| Apr '19 | 71 | 39.4% |



| | | | | | | | | | | | | | |
|--------------------------------|------|------|------|------|------|------|------|------|------|------|------|------|----|
| Current Year | 38 | 47 | 46 | 31 | 40 | 34 | 41 | 33 | 32 | 29 | 30 | 33 | 38 |
| Prior Year | 71 | 78 | 85 | 71 | 63 | 57 | 62 | 62 | 53 | 54 | 35 | 38 | 38 |
| Percent Change from Prior Year | -46% | -40% | -46% | -56% | -37% | -40% | -34% | -47% | -40% | -46% | -14% | -13% | 0% |

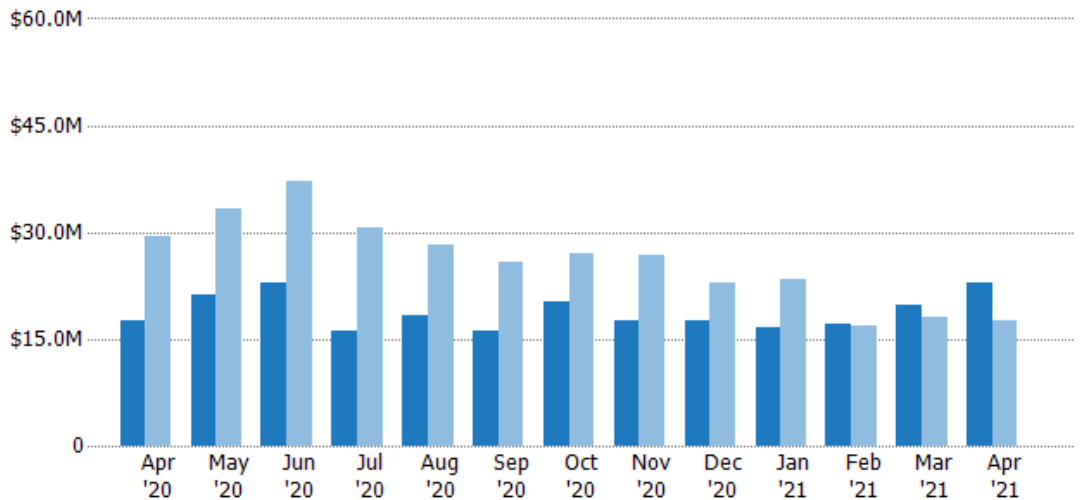
Active Listing Volume

The sum of the listing price of active residential listings at the end of each month.

Filters Used

Custom Area: New River, Arizona
 Property Type:
 Condo/Townhouse/Apt.,
 Mobile/Manufactured, Single Family

| Month/Year | Volume | % Chg. |
|------------|---------|--------|
| Apr '21 | \$23M | 30.3% |
| Apr '20 | \$17.6M | -40.2% |
| Apr '19 | \$29.5M | 87.1% |



| | | | | | | | | | | | | | |
|--------------------------------|---------|---------|---------|---------|---------|---------|---------|---------|---------|---------|---------|---------|---------|
| Current Year | \$17.6M | \$21.1M | \$22.8M | \$16.1M | \$18.4M | \$16M | \$20.2M | \$17.6M | \$17.5M | \$16.5M | \$17.2M | \$19.7M | \$23M |
| Prior Year | \$29.5M | \$33.3M | \$37.1M | \$30.6M | \$28.1M | \$25.7M | \$26.9M | \$26.7M | \$22.8M | \$23.5M | \$16.8M | \$18M | \$17.6M |
| Percent Change from Prior Year | -40% | -37% | -39% | -47% | -35% | -38% | -25% | -34% | -23% | -30% | 2% | 9% | 30% |

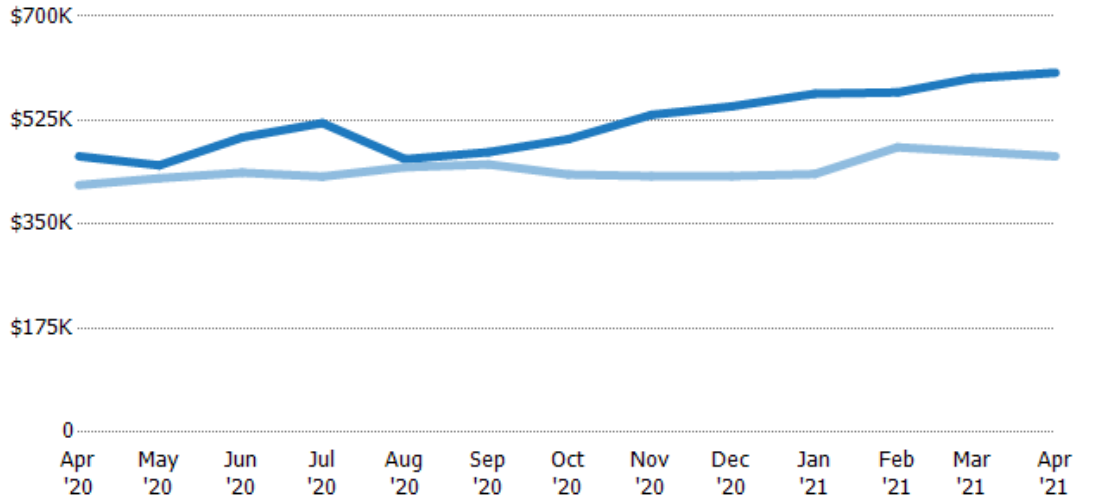
Average Listing Price

The average listing price of active residential listings at the end of each month.

Filters Used

Custom Area: New River, Arizona
 Property Type:
 Condo/Townhouse/Apt.,
 Mobile/Manufactured, Single Family

| Month/Year | Price | % Chg. |
|------------|--------|--------|
| Apr '21 | \$605K | 30.3% |
| Apr '20 | \$464K | 11.6% |
| Apr '19 | \$416K | 34.2% |



| | | | | | | | | | | | | | |
|--------------------------------|--------|--------|--------|--------|--------|--------|--------|--------|--------|--------|--------|--------|--------|
| Current Year | \$464K | \$449K | \$496K | \$520K | \$459K | \$471K | \$493K | \$534K | \$548K | \$570K | \$572K | \$596K | \$605K |
| Prior Year | \$416K | \$427K | \$437K | \$430K | \$446K | \$451K | \$434K | \$431K | \$431K | \$434K | \$480K | \$472K | \$464K |
| Percent Change from Prior Year | 12% | 5% | 14% | 21% | 3% | 5% | 14% | 24% | 27% | 31% | 19% | 26% | 30% |

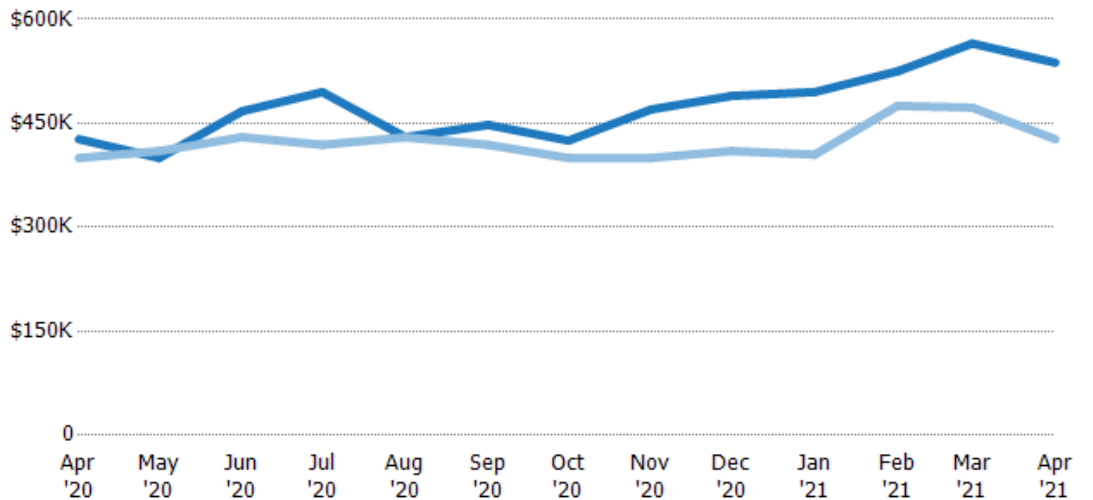
Median Listing Price

The median listing price of active residential listings at the end of each month.

Filters Used

Custom Area: New River, Arizona
 Property Type:
 Condo/Townhouse/Apt.,
 Mobile/Manufactured, Single Family

| Month/Year | Price | % Chg. |
|------------|--------|--------|
| Apr '21 | \$537K | 25.9% |
| Apr '20 | \$427K | 6.8% |
| Apr '19 | \$400K | -5% |



| | | | | | | | | | | | | | |
|--------------------------------|--------|--------|--------|--------|--------|--------|--------|--------|--------|--------|--------|--------|--------|
| Current Year | \$427K | \$400K | \$468K | \$495K | \$430K | \$448K | \$425K | \$470K | \$489K | \$495K | \$525K | \$565K | \$537K |
| Prior Year | \$400K | \$410K | \$430K | \$419K | \$430K | \$419K | \$400K | \$400K | \$410K | \$405K | \$475K | \$473K | \$427K |
| Percent Change from Prior Year | 7% | -2% | 9% | 18% | 0% | 7% | 6% | 18% | 19% | 22% | 11% | 20% | 26% |

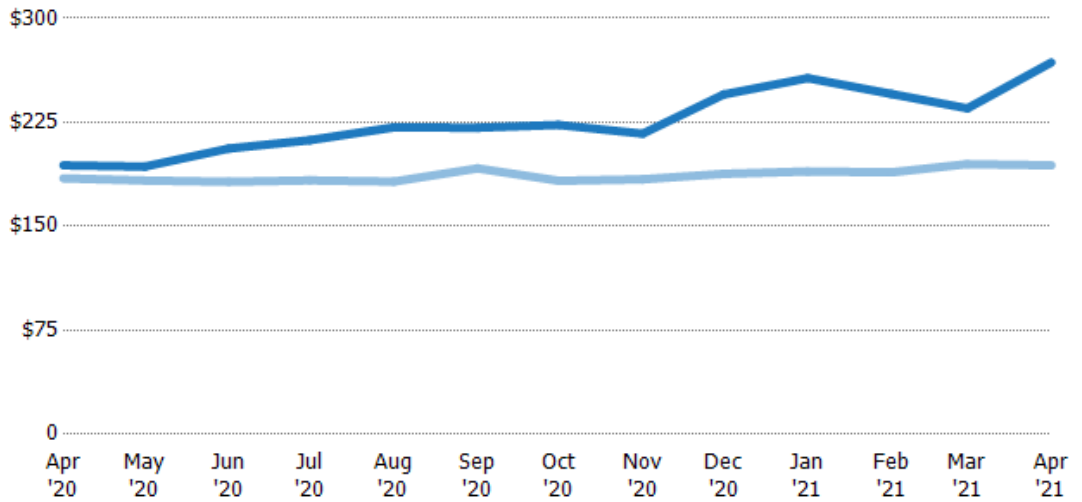
Average Listing Price per Sq Ft

The average of listing prices divided by the living area of homes on market at the end of each month.

Filters Used

Custom Area: New River, Arizona
 Property Type:
 Condo/Townhouse/Apt.,
 Mobile/Manufactured, Single Family

| Month/ Year | Price/sq ft | % Chg. |
|----------------|-------------|--------|
| Apr '21 | \$268 | 38.2% |
| Apr '20 | \$194 | 5.1% |
| Apr '19 | \$185 | -9.4% |



| | | | | | | | | | | | | | |
|--------------------------------|-------|-------|-------|-------|-------|-------|-------|-------|-------|-------|-------|-------|-------|
| Current Year | \$194 | \$193 | \$206 | \$212 | \$221 | \$221 | \$223 | \$217 | \$245 | \$257 | \$245 | \$235 | \$268 |
| Prior Year | \$185 | \$183 | \$182 | \$183 | \$182 | \$192 | \$183 | \$184 | \$188 | \$190 | \$189 | \$195 | \$194 |
| Percent Change from Prior Year | 5% | 5% | 13% | 16% | 21% | 15% | 22% | 18% | 30% | 36% | 30% | 21% | 38% |

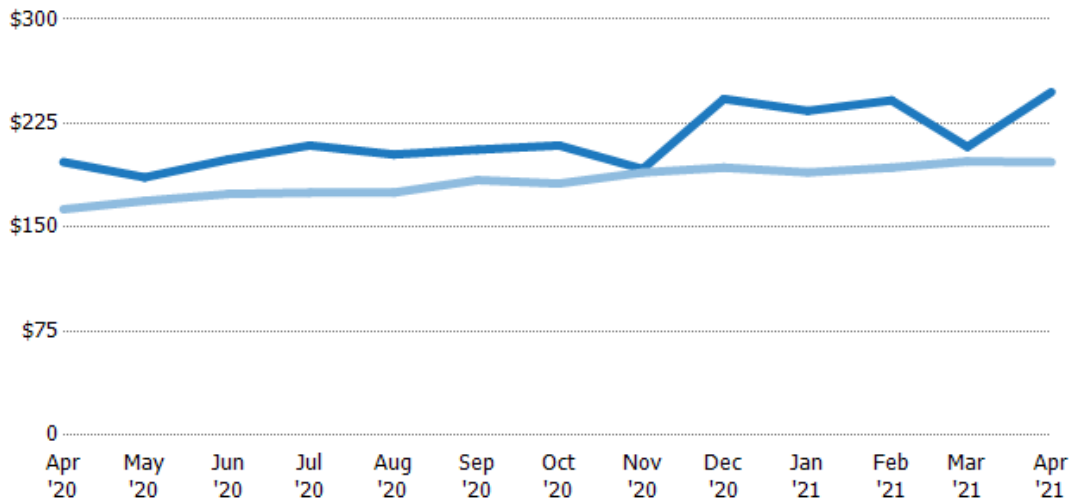
Median Listing Price per Sq Ft

The median of listing prices divided by the living area of homes on market at the end of each month.

Filters Used

Custom Area: New River, Arizona
 Property Type:
 Condo/Townhouse/Apt.,
 Mobile/Manufactured, Single Family

| Month/ Year | Price/sq ft | % Chg. |
|----------------|-------------|--------|
| Apr '21 | \$248 | 25.6% |
| Apr '20 | \$197 | 20.9% |
| Apr '19 | \$163 | -1.2% |



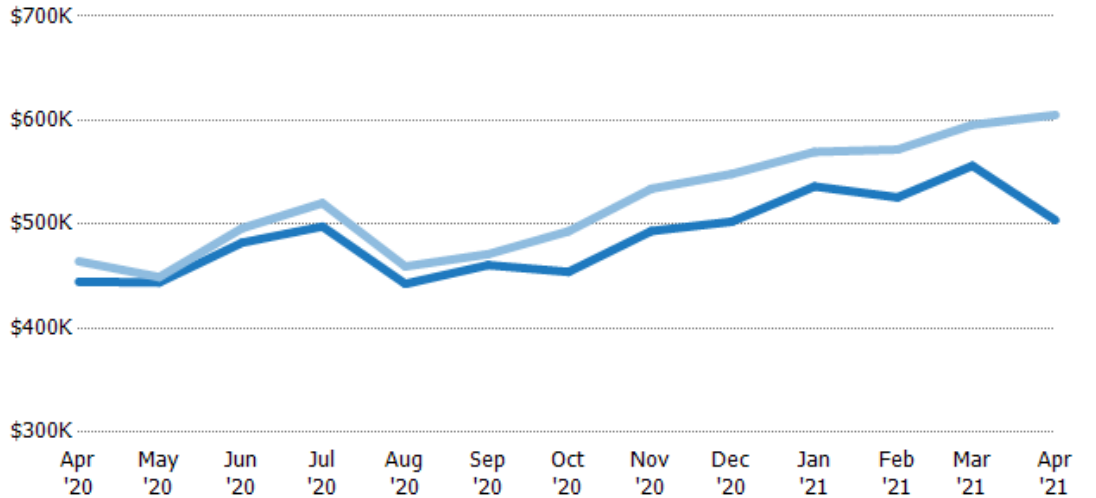
| | | | | | | | | | | | | | |
|--------------------------------|-------|-------|-------|-------|-------|-------|-------|-------|-------|-------|-------|-------|-------|
| Current Year | \$197 | \$186 | \$199 | \$209 | \$203 | \$206 | \$209 | \$192 | \$243 | \$234 | \$242 | \$208 | \$248 |
| Prior Year | \$163 | \$169 | \$174 | \$175 | \$175 | \$184 | \$182 | \$190 | \$193 | \$190 | \$193 | \$198 | \$197 |
| Percent Change from Prior Year | 21% | 10% | 14% | 19% | 16% | 12% | 15% | 1% | 26% | 23% | 25% | 5% | 26% |

Average Listing Price vs Average Est Value

The average listing price as a percentage of the average AVM or RVM® valuation estimate for active listings each month.

Filters Used

Custom Area: New River, Arizona
 Property Type:
 Condo/Townhouse/Apt.,
 Mobile/Manufactured, Single Family



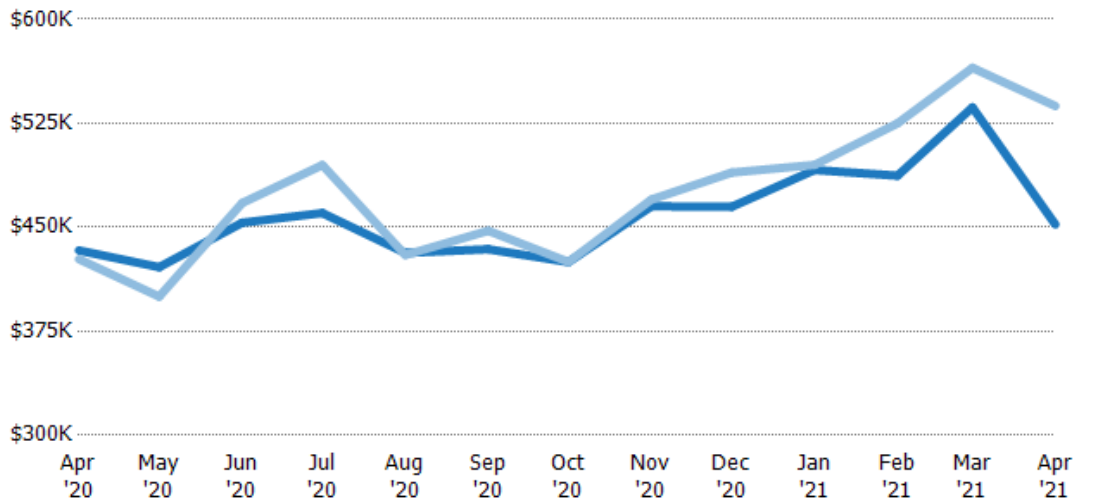
| | | | | | | | | | | | | | |
|---|--------|--------|--------|--------|--------|--------|--------|--------|--------|--------|--------|--------|--------|
| Avg Est Value | \$445K | \$444K | \$482K | \$498K | \$443K | \$461K | \$454K | \$493K | \$502K | \$536K | \$526K | \$556K | \$504K |
| Avg Listing Price | \$464K | \$449K | \$496K | \$520K | \$459K | \$471K | \$493K | \$534K | \$548K | \$570K | \$572K | \$596K | \$605K |
| Avg Listing Price as a % of Avg Est Value | 104% | 101% | 103% | 105% | 104% | 102% | 109% | 108% | 109% | 106% | 109% | 107% | 120% |

Median Listing Price vs Median Est Value

The median listing price as a percentage of the median AVM or RVM® valuation estimate for active listings each month.

Filters Used

Custom Area: New River, Arizona
 Property Type:
 Condo/Townhouse/Apt.,
 Mobile/Manufactured, Single Family



| | | | | | | | | | | | | | |
|---|--------|--------|--------|--------|--------|--------|--------|--------|--------|--------|--------|--------|--------|
| Median Est Value | \$433K | \$421K | \$453K | \$460K | \$432K | \$434K | \$425K | \$465K | \$465K | \$491K | \$487K | \$536K | \$452K |
| Median Listing Price | \$427K | \$400K | \$468K | \$495K | \$430K | \$448K | \$425K | \$470K | \$489K | \$495K | \$525K | \$565K | \$537K |
| Med Listing Price as a % of Med Est Value | 99% | 95% | 103% | 108% | 100% | 103% | 100% | 101% | 105% | 101% | 108% | 105% | 119% |

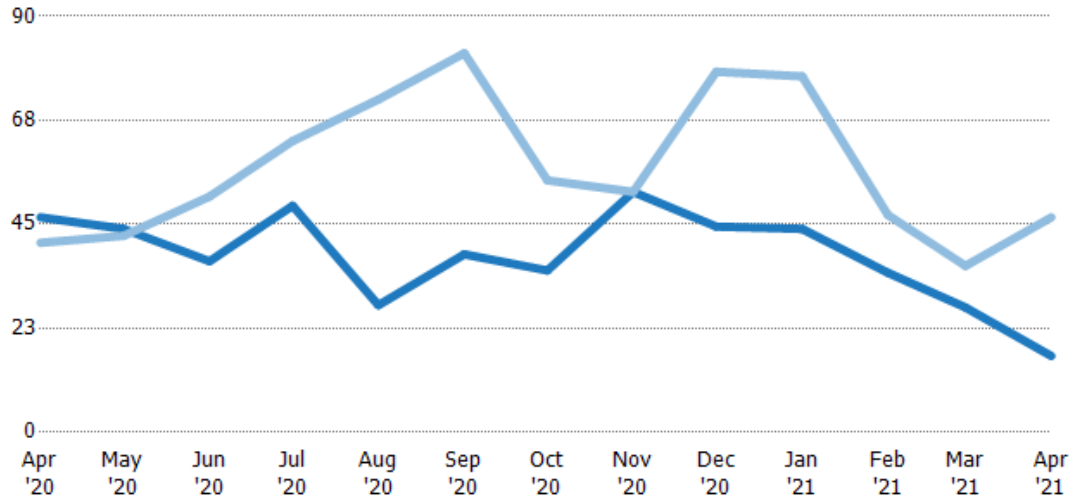
Median Days in RPR

The median number of days between when residential properties are first displayed as active listings in RPR and when accepted offers have been noted in RPR.

Filters Used

Custom Area: New River, Arizona
 Property Type:
 Condo/Townhouse/Apt.,
 Mobile/Manufactured, Single Family

| Month/Year | Days | % Chg. |
|------------|------|--------|
| Apr '21 | 16.5 | -64.5% |
| Apr '20 | 46.5 | 13.4% |
| Apr '19 | 41 | 19.5% |



| | Apr '20 | May '20 | Jun '20 | Jul '20 | Aug '20 | Sep '20 | Oct '20 | Nov '20 | Dec '20 | Jan '21 | Feb '21 | Mar '21 | Apr '21 |
|--------------------------------|---------|---------|---------|---------|---------|---------|---------|---------|---------|---------|---------|---------|---------|
| Current Year | 46.5 | 44 | 37 | 49 | 27.5 | 38.5 | 35 | 52 | 44.5 | 44 | 34.5 | 27 | 16.5 |
| Prior Year | 41 | 42.5 | 51 | 63 | 72 | 82 | 54.5 | 52 | 78 | 77 | 47 | 36 | 46.5 |
| Percent Change from Prior Year | 13% | 4% | -27% | -22% | -62% | -53% | -36% | 0% | -43% | -43% | -27% | -25% | -65% |

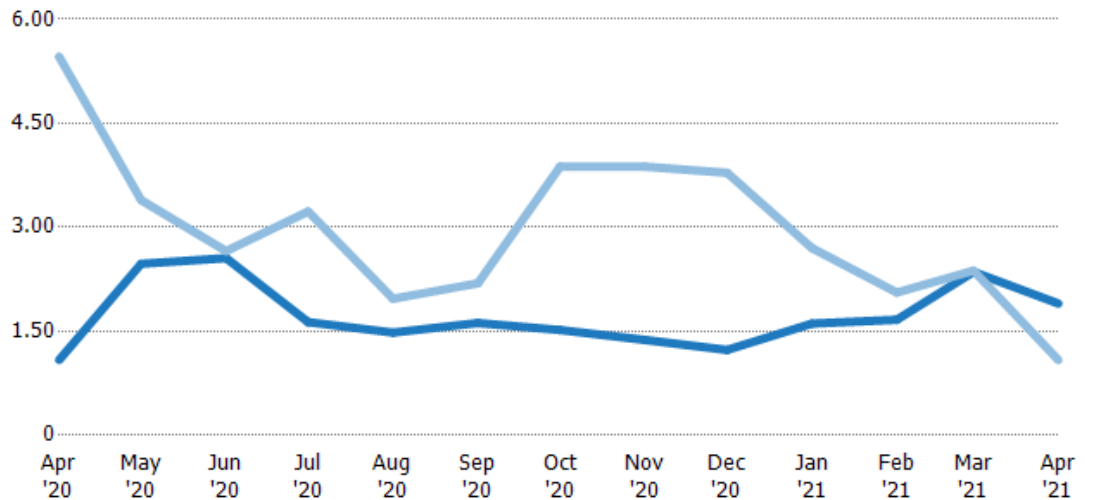
Months of Inventory

The number of months it would take to exhaust active listings at the current sales rate.

Filters Used

Custom Area: New River, Arizona
 Property Type:
 Condo/Townhouse/Apt.,
 Mobile/Manufactured, Single Family

| Month/Year | Months | % Chg. |
|------------|--------|--------|
| Apr '21 | 1.9 | 75% |
| Apr '20 | 1.09 | -80.1% |
| Apr '19 | 5.46 | -21.2% |



| | Apr '20 | May '20 | Jun '20 | Jul '20 | Aug '20 | Sep '20 | Oct '20 | Nov '20 | Dec '20 | Jan '21 | Feb '21 | Mar '21 | Apr '21 |
|--------------------------------|---------|---------|---------|---------|---------|---------|---------|---------|---------|---------|---------|---------|---------|
| Current Year | 1.09 | 2.47 | 2.56 | 1.63 | 1.48 | 1.62 | 1.52 | 1.38 | 1.23 | 1.61 | 1.67 | 2.36 | 1.9 |
| Prior Year | 5.46 | 3.39 | 2.66 | 3.23 | 1.97 | 2.19 | 3.88 | 3.88 | 3.79 | 2.7 | 2.06 | 2.38 | 1.09 |
| Percent Change from Prior Year | -80% | -27% | -4% | -49% | -25% | -26% | -61% | -65% | -67% | -40% | -19% | -1% | 75% |

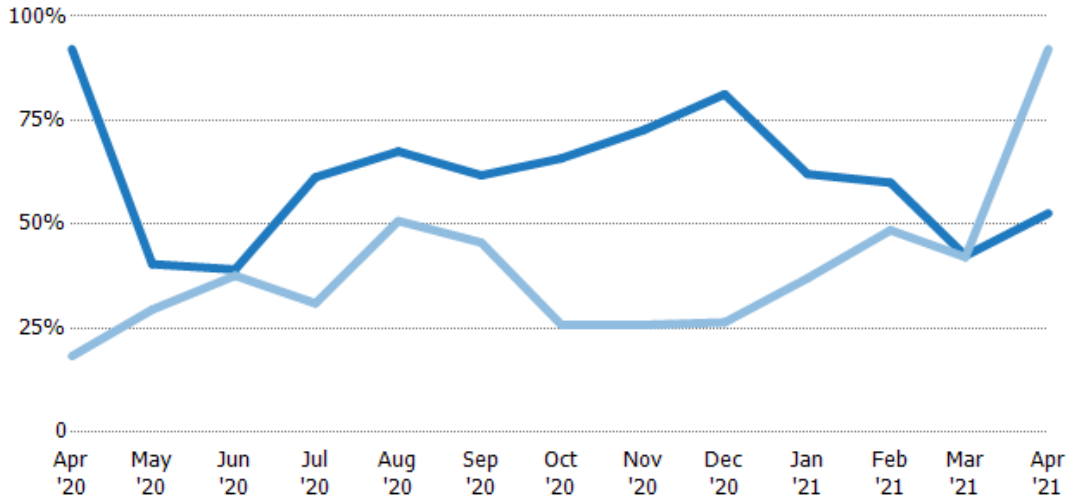
Absorption Rate

The percentage of inventory sold per month.

Filters Used

Custom Area: New River, Arizona
 Property Type:
 Condo/Townhouse/Apt.,
 Mobile/Manufactured, Single Family

| Month/Year | Rate | Chg. |
|------------|------|--------|
| Apr '21 | 53% | 39.5% |
| Apr '20 | 92% | -73.8% |
| Apr '19 | 18% | 26.9% |



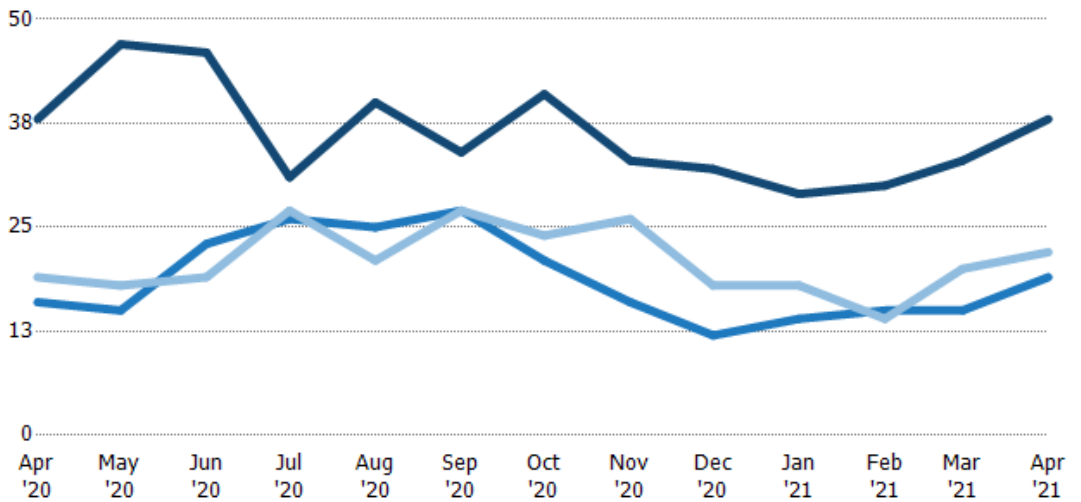
| | Apr '20 | May '20 | Jun '20 | Jul '20 | Aug '20 | Sep '20 | Oct '20 | Nov '20 | Dec '20 | Jan '21 | Feb '21 | Mar '21 | Apr '21 |
|------------------------|---------|---------|---------|---------|---------|---------|---------|---------|---------|---------|---------|---------|---------|
| Current Year | 92% | 40% | 39% | 61% | 68% | 62% | 66% | 73% | 81% | 62% | 60% | 42% | 53% |
| Prior Year | 18% | 29% | 38% | 31% | 51% | 46% | 26% | 26% | 26% | 37% | 49% | 42% | 92% |
| Change from Prior Year | -74% | -11% | -1% | -30% | -17% | -16% | -40% | -47% | -55% | -25% | -11% | 0% | 39% |

Active/Pending/Sold Units

The number of residential properties that were Active, Pending and Sold each month.

Filters Used

Custom Area: New River, Arizona
 Property Type:
 Condo/Townhouse/Apt.,
 Mobile/Manufactured, Single Family



| | Apr '20 | May '20 | Jun '20 | Jul '20 | Aug '20 | Sep '20 | Oct '20 | Nov '20 | Dec '20 | Jan '21 | Feb '21 | Mar '21 | Apr '21 |
|---------|---------|---------|---------|---------|---------|---------|---------|---------|---------|---------|---------|---------|---------|
| Active | 38 | 47 | 46 | 31 | 40 | 34 | 41 | 33 | 32 | 29 | 30 | 33 | 38 |
| Pending | 16 | 15 | 23 | 26 | 25 | 27 | 21 | 16 | 12 | 14 | 15 | 15 | 19 |
| Sold | 19 | 18 | 19 | 27 | 21 | 27 | 24 | 26 | 18 | 18 | 14 | 20 | 22 |

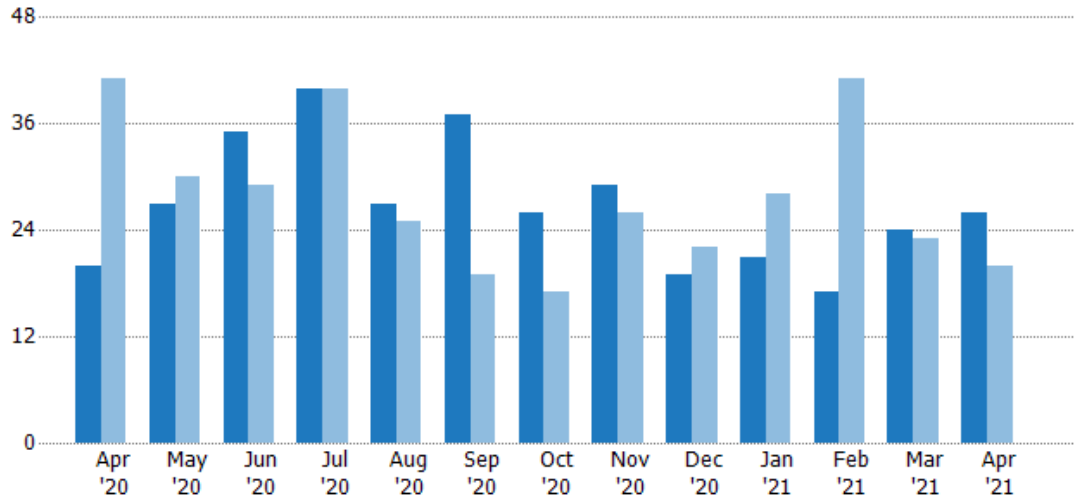
New Pending Sales

The number of residential properties with accepted offers that were added each month.

Filters Used

Custom Area: New River, Arizona
 Property Type:
 Condo/Townhouse/Apt.,
 Mobile/Manufactured, Single Family

| Month/Year | Count | % Chg. |
|------------|-------|--------|
| Apr '21 | 26 | 30% |
| Apr '20 | 20 | -51.2% |
| Apr '19 | 41 | -34.1% |



| | Apr '20 | May '20 | Jun '20 | Jul '20 | Aug '20 | Sep '20 | Oct '20 | Nov '20 | Dec '20 | Jan '21 | Feb '21 | Mar '21 | Apr '21 |
|--------------------------------|---------|---------|---------|---------|---------|---------|---------|---------|---------|---------|---------|---------|---------|
| Current Year | 20 | 27 | 35 | 40 | 27 | 37 | 26 | 29 | 19 | 21 | 17 | 24 | 26 |
| Prior Year | 41 | 30 | 29 | 40 | 25 | 19 | 17 | 26 | 22 | 28 | 41 | 23 | 20 |
| Percent Change from Prior Year | -51% | -10% | 21% | 0% | 8% | 95% | 53% | 12% | -14% | -25% | -59% | 4% | 30% |

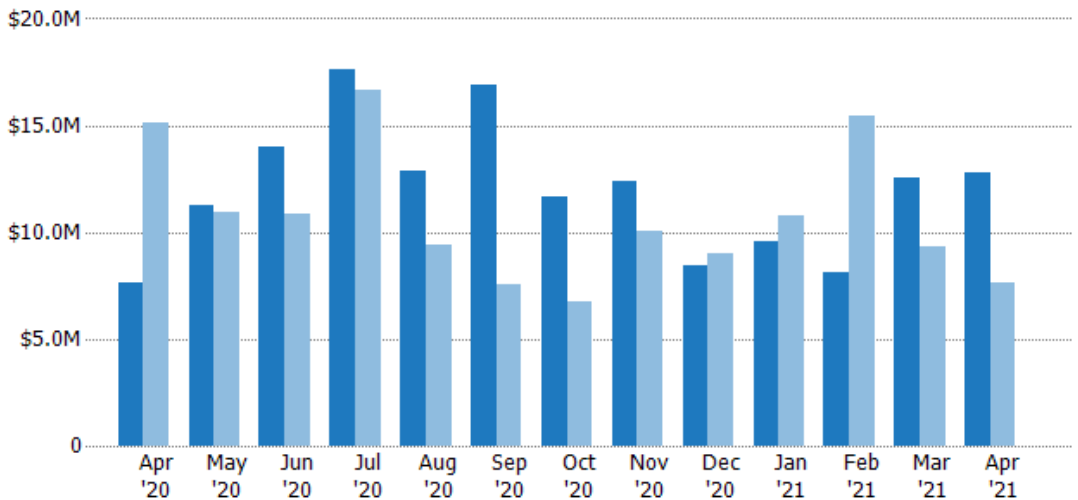
New Pending Sales Volume

The sum of the sales price of residential properties with accepted offers that were added each month.

Filters Used

Custom Area: New River, Arizona
 Property Type:
 Condo/Townhouse/Apt.,
 Mobile/Manufactured, Single Family

| Month/Year | Volume | % Chg. |
|------------|---------|--------|
| Apr '21 | \$12.8M | 67.2% |
| Apr '20 | \$7.63M | -49.5% |
| Apr '19 | \$15.1M | -28.1% |



| | Apr '20 | May '20 | Jun '20 | Jul '20 | Aug '20 | Sep '20 | Oct '20 | Nov '20 | Dec '20 | Jan '21 | Feb '21 | Mar '21 | Apr '21 |
|--------------------------------|---------|---------|---------|---------|---------|---------|---------|---------|---------|---------|---------|---------|---------|
| Current Year | \$7.63M | \$11.2M | \$14M | \$17.7M | \$12.8M | \$16.9M | \$11.7M | \$12.4M | \$8.4M | \$9.55M | \$8.12M | \$12.6M | \$12.8M |
| Prior Year | \$15.1M | \$11M | \$10.9M | \$16.6M | \$9.43M | \$7.54M | \$6.73M | \$10.1M | \$8.98M | \$10.8M | \$15.5M | \$9.32M | \$7.63M |
| Percent Change from Prior Year | -50% | 3% | 29% | 6% | 36% | 124% | 74% | 23% | -6% | -11% | -47% | 35% | 67% |

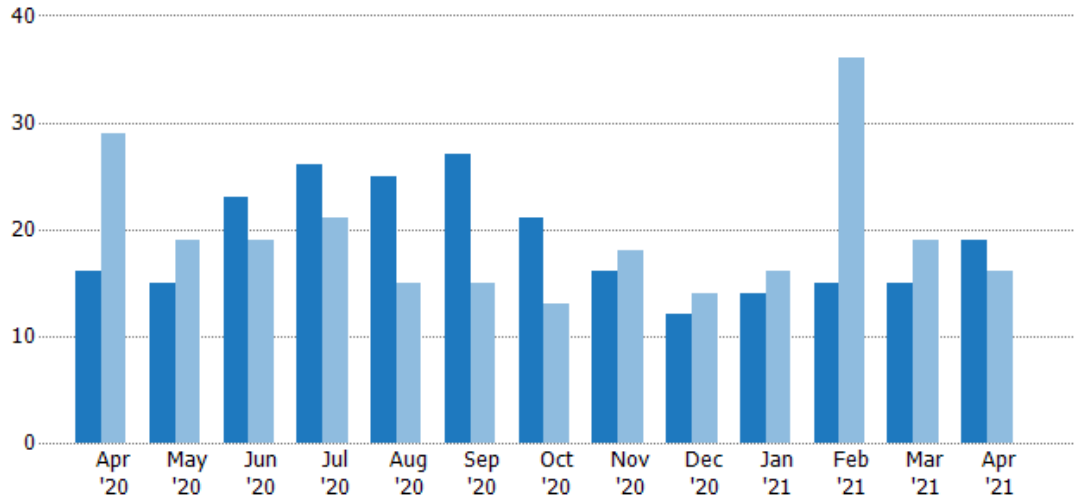
Pending Sales

The number of residential properties with accepted offers that were available at the end each month.

Filters Used

Custom Area: New River, Arizona
 Property Type:
 Condo/Townhouse/Apt.,
 Mobile/Manufactured, Single Family

| Month/Year | Count | % Chg. |
|------------|-------|--------|
| Apr '21 | 19 | 18.8% |
| Apr '20 | 16 | -44.8% |
| Apr '19 | 29 | -20.7% |



| | Apr '20 | May '20 | Jun '20 | Jul '20 | Aug '20 | Sep '20 | Oct '20 | Nov '20 | Dec '20 | Jan '21 | Feb '21 | Mar '21 | Apr '21 |
|--------------------------------|---------|---------|---------|---------|---------|---------|---------|---------|---------|---------|---------|---------|---------|
| Current Year | 16 | 15 | 23 | 26 | 25 | 27 | 21 | 16 | 12 | 14 | 15 | 15 | 19 |
| Prior Year | 29 | 19 | 19 | 21 | 15 | 15 | 13 | 18 | 14 | 16 | 36 | 19 | 16 |
| Percent Change from Prior Year | -45% | -21% | 21% | 24% | 67% | 80% | 62% | -11% | -14% | -13% | -58% | -21% | 19% |

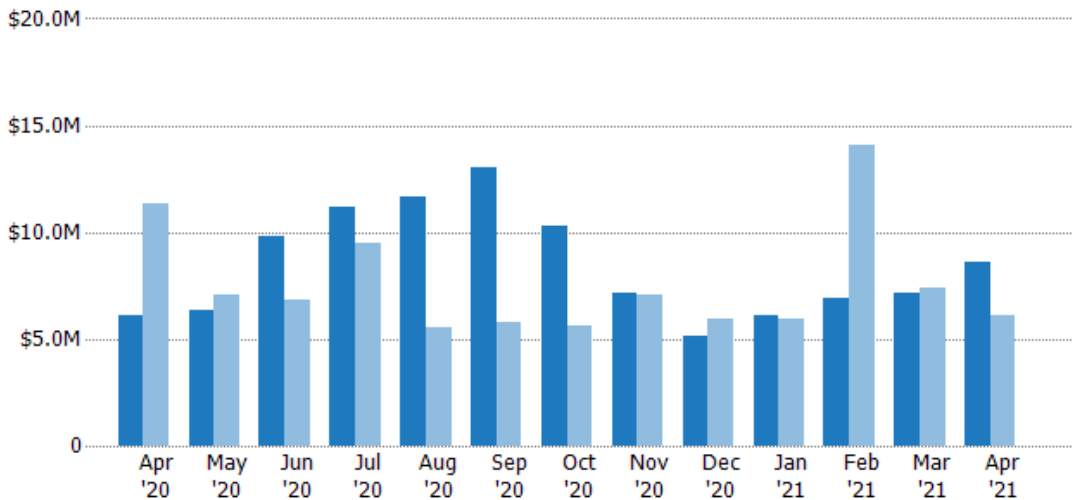
Pending Sales Volume

The sum of the sales price of residential properties with accepted offers that were available at the end of each month.

Filters Used

Custom Area: New River, Arizona
 Property Type:
 Condo/Townhouse/Apt.,
 Mobile/Manufactured, Single Family

| Month/Year | Volume | % Chg. |
|------------|---------|--------|
| Apr '21 | \$8.63M | 41.5% |
| Apr '20 | \$6.1M | -46.2% |
| Apr '19 | \$11.3M | -18.1% |



| | Apr '20 | May '20 | Jun '20 | Jul '20 | Aug '20 | Sep '20 | Oct '20 | Nov '20 | Dec '20 | Jan '21 | Feb '21 | Mar '21 | Apr '21 |
|--------------------------------|---------|---------|---------|---------|---------|---------|---------|---------|---------|---------|---------|---------|---------|
| Current Year | \$6.1M | \$6.32M | \$9.79M | \$11.2M | \$11.6M | \$13.1M | \$10.3M | \$7.19M | \$5.12M | \$6.11M | \$6.94M | \$7.15M | \$8.63M |
| Prior Year | \$11.3M | \$7.09M | \$6.79M | \$9.5M | \$5.53M | \$5.78M | \$5.64M | \$7.08M | \$5.92M | \$5.97M | \$14M | \$7.43M | \$6.1M |
| Percent Change from Prior Year | -46% | -11% | 44% | 18% | 111% | 126% | 83% | 1% | -13% | 2% | -51% | -4% | 41% |

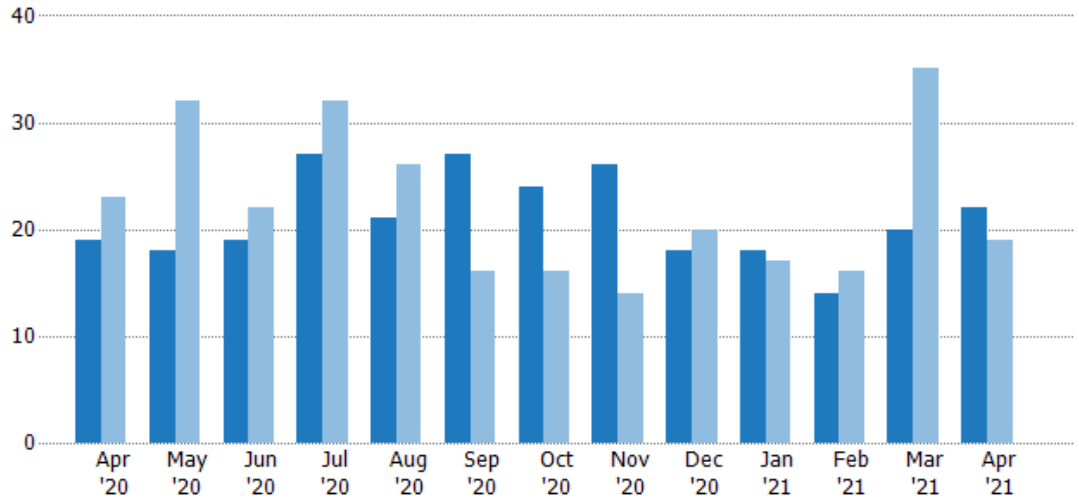
Closed Sales

The total number of residential properties sold each month.

Filters Used

Custom Area: New River, Arizona
 Property Type:
 Condo/Townhouse/Apt.,
 Mobile/Manufactured, Single Family

| Month/ Year | Count | % Chg. |
|----------------|-------|--------|
| Apr '21 | 22 | 15.8% |
| Apr '20 | 19 | -17.4% |
| Apr '19 | 23 | 21.7% |



| | Apr '20 | May '20 | Jun '20 | Jul '20 | Aug '20 | Sep '20 | Oct '20 | Nov '20 | Dec '20 | Jan '21 | Feb '21 | Mar '21 | Apr '21 |
|--------------------------------|---------|---------|---------|---------|---------|---------|---------|---------|---------|---------|---------|---------|---------|
| Current Year | 19 | 18 | 19 | 27 | 21 | 27 | 24 | 26 | 18 | 18 | 14 | 20 | 22 |
| Prior Year | 23 | 32 | 22 | 32 | 26 | 16 | 16 | 14 | 20 | 17 | 16 | 35 | 19 |
| Percent Change from Prior Year | -17% | -44% | -14% | -16% | -19% | 69% | 50% | 86% | -10% | 6% | -13% | -43% | 16% |

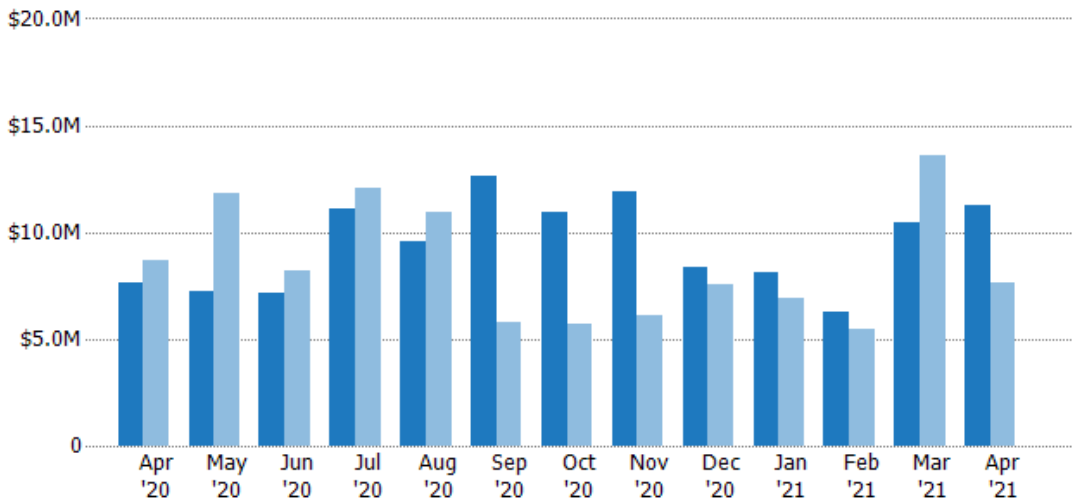
Closed Sales Volume

The sum of the sales price of residential properties sold each month.

Filters Used

Custom Area: New River, Arizona
 Property Type:
 Condo/Townhouse/Apt.,
 Mobile/Manufactured, Single Family

| Month/ Year | Volume | % Chg. |
|----------------|---------|--------|
| Apr '21 | \$11.3M | 47.5% |
| Apr '20 | \$7.63M | -12.3% |
| Apr '19 | \$8.7M | 23.8% |



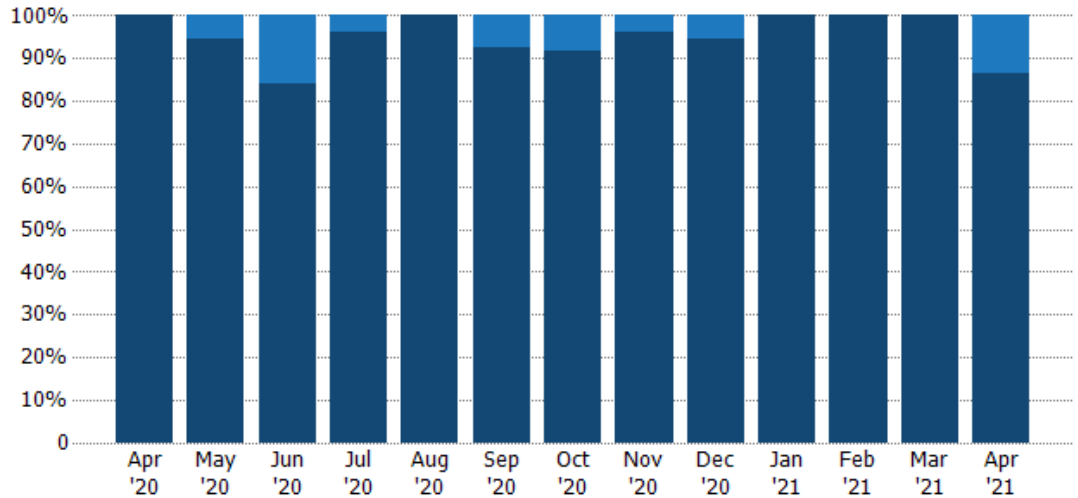
| | Apr '20 | May '20 | Jun '20 | Jul '20 | Aug '20 | Sep '20 | Oct '20 | Nov '20 | Dec '20 | Jan '21 | Feb '21 | Mar '21 | Apr '21 |
|--------------------------------|---------|---------|---------|---------|---------|---------|---------|---------|---------|---------|---------|---------|---------|
| Current Year | \$7.63M | \$7.27M | \$7.14M | \$11.1M | \$9.55M | \$12.6M | \$11M | \$11.9M | \$8.34M | \$8.09M | \$6.23M | \$10.5M | \$11.3M |
| Prior Year | \$8.7M | \$11.8M | \$8.17M | \$12.1M | \$11M | \$5.76M | \$5.7M | \$6.08M | \$7.56M | \$6.91M | \$5.48M | \$13.6M | \$7.63M |
| Percent Change from Prior Year | -12% | -39% | -13% | -8% | -13% | 119% | 92% | 95% | 10% | 17% | 14% | -23% | 48% |

Closed Sales by Property Type

The percentage of residential properties sold each month by property type.

Filters Used

Custom Area: New River, Arizona
 Property Type:
 Condo/Townhouse/Apt.,
 Mobile/Manufactured, Single Family



| Property Type | Apr '20 | May '20 | Jun '20 | Jul '20 | Aug '20 | Sep '20 | Oct '20 | Nov '20 | Dec '20 | Jan '21 | Feb '21 | Mar '21 | Apr '21 |
|-------------------------|---------|---------|---------|---------|---------|---------|---------|---------|---------|---------|---------|---------|---------|
| Mobile/Manufactured | - | 6% | 16% | 4% | - | 7% | 8% | 4% | 6% | - | - | - | 14% |
| Single Family Residence | 100% | 94% | 84% | 96% | 100% | 93% | 92% | 96% | 94% | 100% | 100% | 100% | 86% |

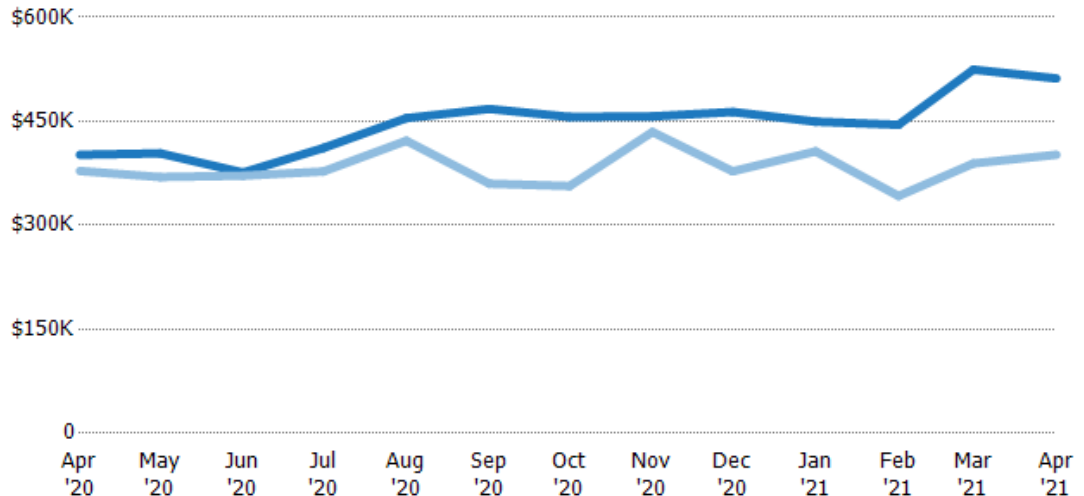
Average Sales Price

The average sales price of the residential properties sold each month.

Filters Used

Custom Area: New River, Arizona
 Property Type:
 Condo/Townhouse/Apt.,
 Mobile/Manufactured, Single Family

| Month/Year | Price | % Chg. |
|------------|--------|--------|
| Apr '21 | \$512K | 27.4% |
| Apr '20 | \$402K | 6.2% |
| Apr '19 | \$378K | 1.7% |



| Property Type | Apr '20 | May '20 | Jun '20 | Jul '20 | Aug '20 | Sep '20 | Oct '20 | Nov '20 | Dec '20 | Jan '21 | Feb '21 | Mar '21 | Apr '21 |
|--------------------------------|---------|---------|---------|---------|---------|---------|---------|---------|---------|---------|---------|---------|---------|
| Current Year | \$402K | \$404K | \$376K | \$411K | \$455K | \$468K | \$456K | \$457K | \$463K | \$449K | \$445K | \$525K | \$512K |
| Prior Year | \$378K | \$370K | \$372K | \$378K | \$422K | \$360K | \$357K | \$435K | \$378K | \$407K | \$342K | \$389K | \$402K |
| Percent Change from Prior Year | 6% | 9% | 1% | 9% | 8% | 30% | 28% | 5% | 23% | 11% | 30% | 35% | 27% |

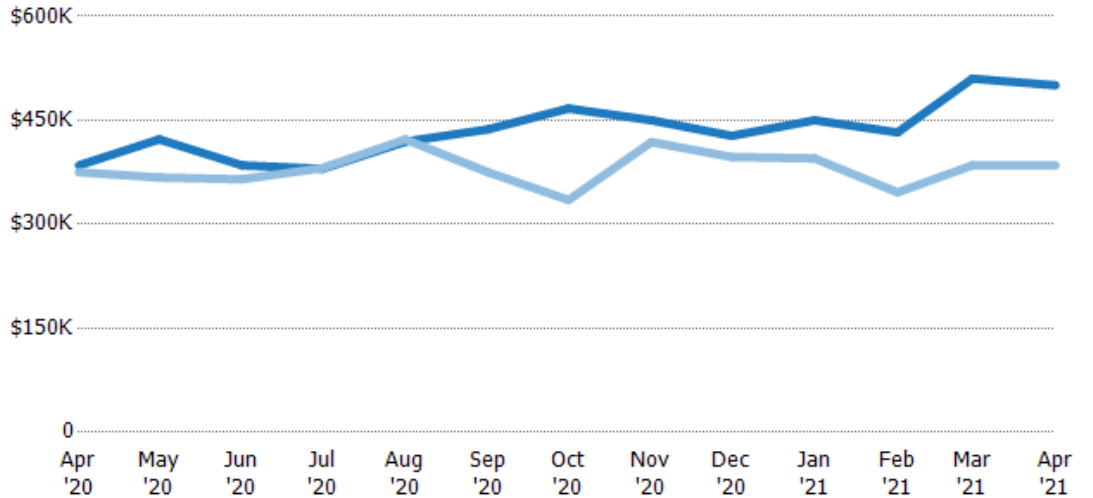
Median Sales Price

The median sales price of the residential properties sold each month.

Filters Used

Custom Area: New River, Arizona
 Property Type:
 Condo/Townhouse/Apt.,
 Mobile/Manufactured, Single Family

| Month/ Year | Price | % Chg. |
|----------------|--------|--------|
| Apr '21 | \$501K | 30% |
| Apr '20 | \$385K | 2.7% |
| Apr '19 | \$375K | 4.7% |



| | | | | | | | | | | | | | |
|--------------------------------|--------|--------|--------|--------|--------|--------|--------|--------|--------|--------|--------|--------|--------|
| Current Year | \$385K | \$423K | \$385K | \$380K | \$419K | \$437K | \$467K | \$450K | \$428K | \$450K | \$433K | \$510K | \$501K |
| Prior Year | \$375K | \$367K | \$365K | \$381K | \$422K | \$375K | \$335K | \$419K | \$397K | \$395K | \$346K | \$385K | \$385K |
| Percent Change from Prior Year | 3% | 15% | 5% | 0% | -1% | 17% | 39% | 8% | 8% | 14% | 25% | 32% | 30% |

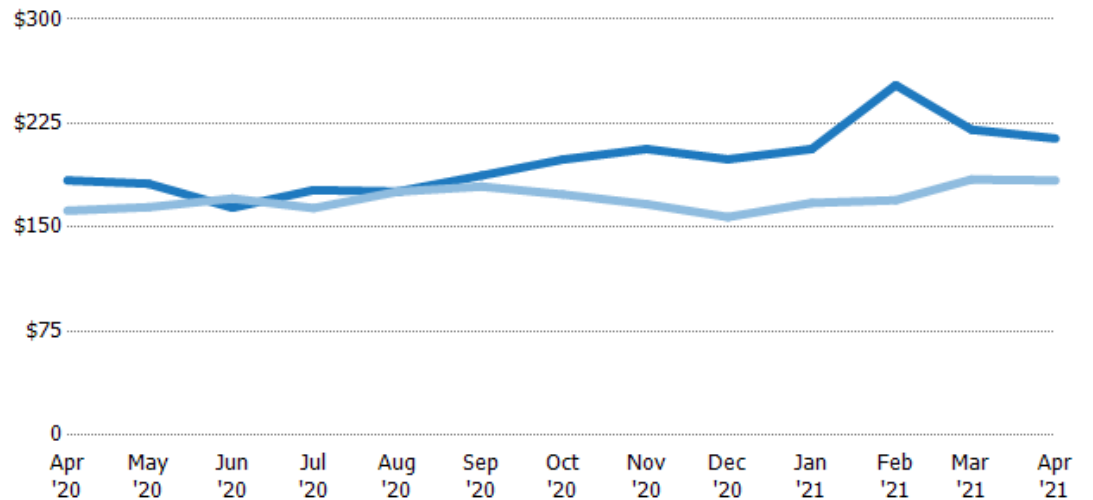
Average Sales Price per Sq Ft

The average of the sales price divided by the living area of properties sold each month.

Filters Used

Custom Area: New River, Arizona
 Property Type:
 Condo/Townhouse/Apt.,
 Mobile/Manufactured, Single Family

| Month/ Year | Price/sq ft | % Chg. |
|----------------|-------------|--------|
| Apr '21 | \$214 | 16.5% |
| Apr '20 | \$184 | 13.5% |
| Apr '19 | \$162 | -3.5% |



| | | | | | | | | | | | | | |
|--------------------------------|-------|-------|-------|-------|-------|-------|-------|-------|-------|-------|-------|-------|-------|
| Current Year | \$184 | \$181 | \$164 | \$177 | \$176 | \$187 | \$199 | \$206 | \$199 | \$206 | \$253 | \$220 | \$214 |
| Prior Year | \$162 | \$164 | \$171 | \$164 | \$176 | \$179 | \$174 | \$167 | \$157 | \$168 | \$170 | \$184 | \$184 |
| Percent Change from Prior Year | 13% | 10% | -4% | 8% | 0% | 4% | 14% | 24% | 26% | 23% | 49% | 20% | 16% |

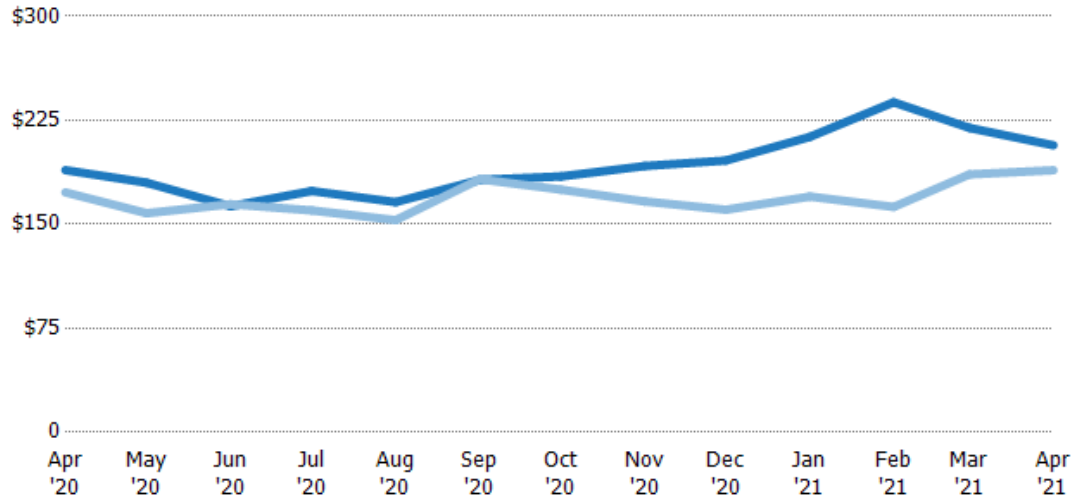
Median Sales Price per Sq Ft

The median of the sales price divided by the living area of properties sold each month.

Filters Used

Custom Area: New River, Arizona
 Property Type:
 Condo/Townhouse/Apt.,
 Mobile/Manufactured, Single Family

| Month/ Year | Price/sq ft | % Chg. |
|----------------|-------------|--------|
| Apr '21 | \$207 | 9.5% |
| Apr '20 | \$189 | 9.2% |
| Apr '19 | \$173 | -7.8% |



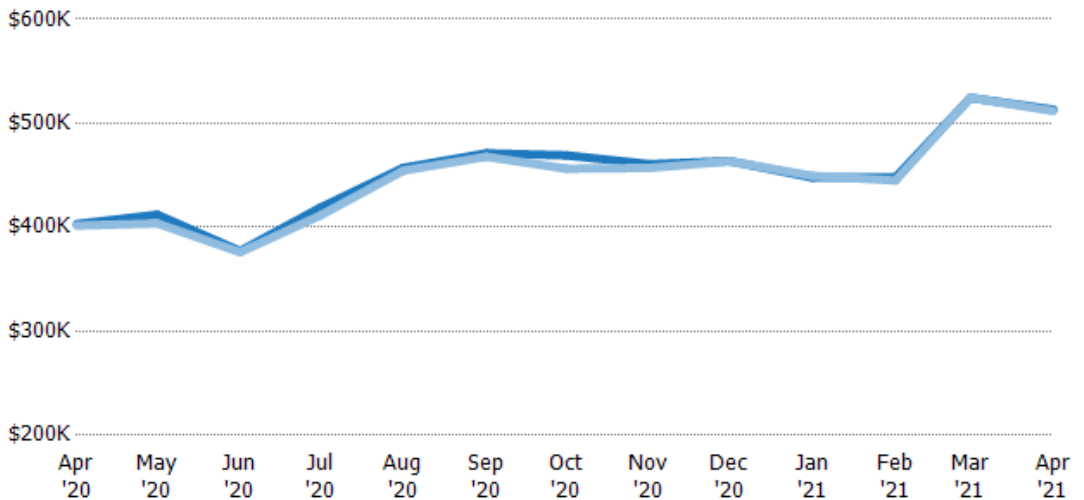
| | Apr '20 | May '20 | Jun '20 | Jul '20 | Aug '20 | Sep '20 | Oct '20 | Nov '20 | Dec '20 | Jan '21 | Feb '21 | Mar '21 | Apr '21 |
|--------------------------------|---------|---------|---------|---------|---------|---------|---------|---------|---------|---------|---------|---------|---------|
| Current Year | \$189 | \$180 | \$163 | \$174 | \$166 | \$182 | \$185 | \$192 | \$196 | \$213 | \$238 | \$220 | \$207 |
| Prior Year | \$173 | \$158 | \$165 | \$160 | \$153 | \$183 | \$175 | \$167 | \$161 | \$170 | \$163 | \$186 | \$189 |
| Percent Change from Prior Year | 9% | 14% | -1% | 9% | 8% | 0% | 5% | 15% | 22% | 25% | 46% | 18% | 10% |

Average Sales Price vs Average Listing Price

The average sales price as a percentage of the average listing price for properties sold each month.

Filters Used

Custom Area: New River, Arizona
 Property Type:
 Condo/Townhouse/Apt.,
 Mobile/Manufactured, Single Family



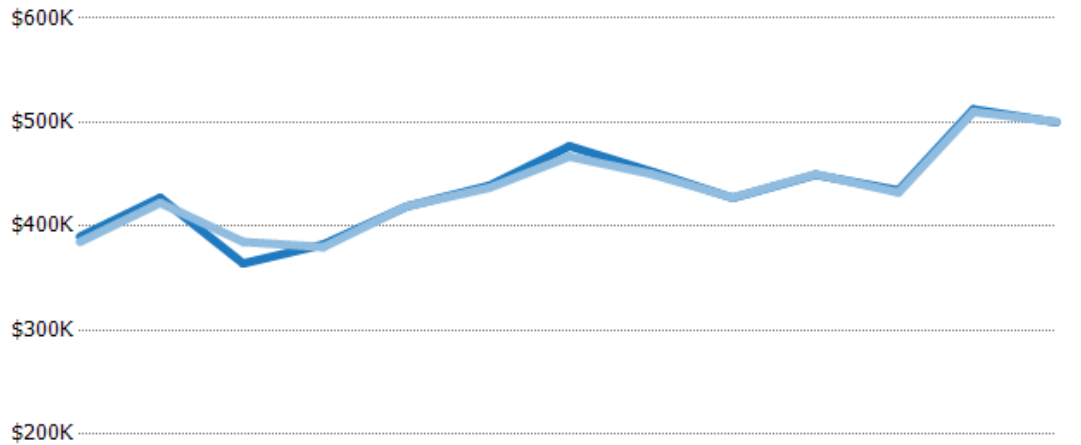
| | Apr '20 | May '20 | Jun '20 | Jul '20 | Aug '20 | Sep '20 | Oct '20 | Nov '20 | Dec '20 | Jan '21 | Feb '21 | Mar '21 | Apr '21 |
|--|---------|---------|---------|---------|---------|---------|---------|---------|---------|---------|---------|---------|---------|
| Avg List Price | \$403K | \$412K | \$377K | \$419K | \$457K | \$471K | \$469K | \$461K | \$464K | \$448K | \$448K | \$525K | \$513K |
| Avg Sales Price | \$402K | \$404K | \$376K | \$411K | \$455K | \$468K | \$456K | \$457K | \$463K | \$449K | \$445K | \$525K | \$512K |
| Avg Sales Price as a % of Avg List Price | 100% | 98% | 100% | 98% | 99% | 99% | 97% | 99% | 100% | 100% | 99% | 100% | 100% |

Median Sales Price vs Median Listing Price

The median sales price as a percentage of the median listing price for properties sold each month.

Filters Used

Custom Area: New River, Arizona
 Property Type:
 Condo/Townhouse/Apt.,
 Mobile/Manufactured, Single Family



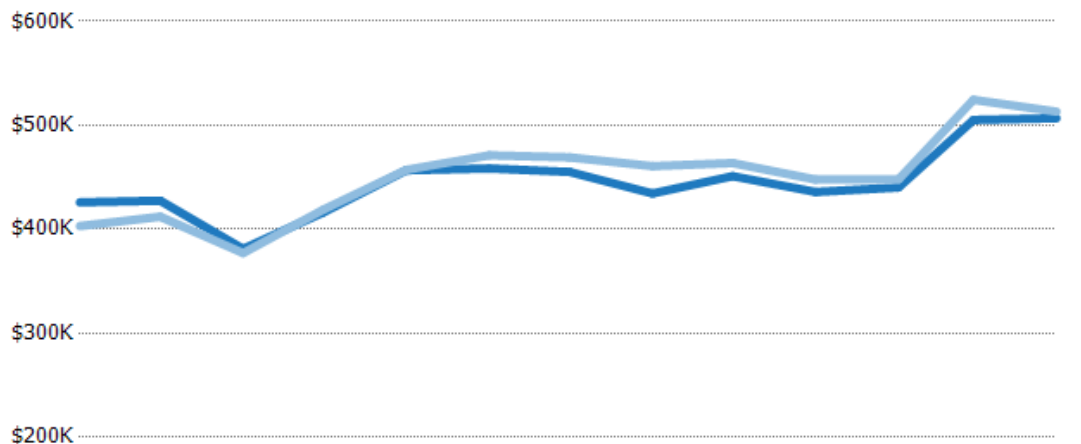
| | Apr '20 | May '20 | Jun '20 | Jul '20 | Aug '20 | Sep '20 | Oct '20 | Nov '20 | Dec '20 | Jan '21 | Feb '21 | Mar '21 | Apr '21 |
|--|---------|---------|---------|---------|---------|---------|---------|---------|---------|---------|---------|---------|---------|
| Median List Price | \$390K | \$427K | \$364K | \$382K | \$419K | \$439K | \$477K | \$452K | \$427K | \$450K | \$435K | \$512K | \$500K |
| Median Sales Price | \$385K | \$423K | \$385K | \$380K | \$419K | \$437K | \$467K | \$450K | \$428K | \$450K | \$433K | \$510K | \$501K |
| Med Sales Price as a % of Med List Price | 99% | 99% | 106% | 99% | 100% | 100% | 98% | 100% | 100% | 100% | 100% | 100% | 100% |

Average Sales Price vs Average Est Value

The average sales price as a percentage of the average AVM or RVM® valuation estimate for properties sold each month.

Filters Used

Custom Area: New River, Arizona
 Property Type:
 Condo/Townhouse/Apt.,
 Mobile/Manufactured, Single Family



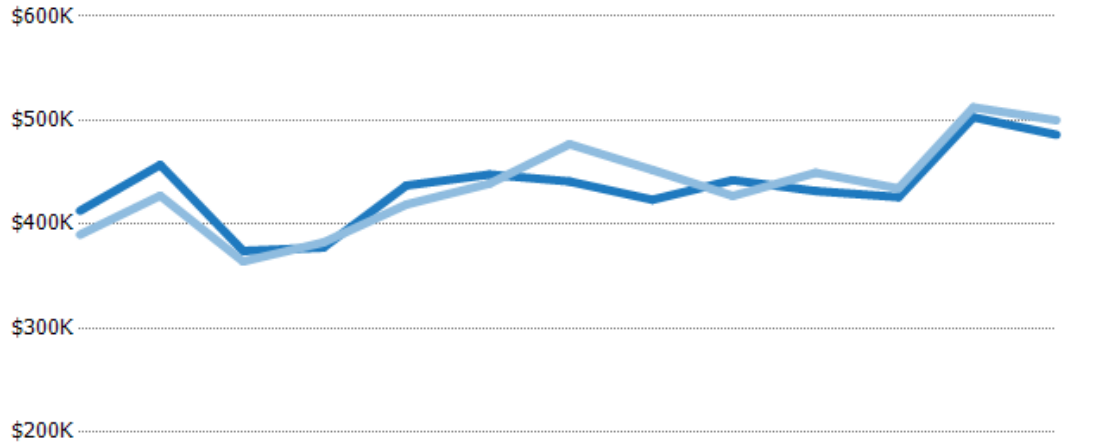
| | Apr '20 | May '20 | Jun '20 | Jul '20 | Aug '20 | Sep '20 | Oct '20 | Nov '20 | Dec '20 | Jan '21 | Feb '21 | Mar '21 | Apr '21 |
|---|---------|---------|---------|---------|---------|---------|---------|---------|---------|---------|---------|---------|---------|
| Avg Est Value | \$426K | \$427K | \$381K | \$416K | \$457K | \$458K | \$455K | \$434K | \$451K | \$436K | \$440K | \$505K | \$507K |
| Avg Sales Price | \$403K | \$412K | \$377K | \$419K | \$457K | \$471K | \$469K | \$461K | \$464K | \$448K | \$448K | \$525K | \$513K |
| Avg Sales Price as a % of Avg Est Value | 95% | 96% | 99% | 101% | 100% | 103% | 103% | 106% | 103% | 103% | 102% | 104% | 101% |

Median Sales Price vs Median Est Value

The median sales price as a percent of the median AVM or RVM® valuation estimate for properties sold each month.

Filters Used

Custom Area: New River, Arizona
 Property Type:
 Condo/Townhouse/Apt.,
 Mobile/Manufactured, Single Family



| | Apr '20 | May '20 | Jun '20 | Jul '20 | Aug '20 | Sep '20 | Oct '20 | Nov '20 | Dec '20 | Jan '21 | Feb '21 | Mar '21 | Apr '21 |
|---|---------|---------|---------|---------|---------|---------|---------|---------|---------|---------|---------|---------|---------|
| Median Est Value | \$413K | \$457K | \$374K | \$378K | \$437K | \$448K | \$441K | \$424K | \$442K | \$432K | \$426K | \$503K | \$486K |
| Median Sales Price | \$390K | \$427K | \$364K | \$382K | \$419K | \$439K | \$477K | \$452K | \$427K | \$450K | \$435K | \$512K | \$500K |
| Med Sales Price as a % of Med Est Value | 94% | 94% | 97% | 101% | 96% | 98% | 108% | 107% | 97% | 104% | 102% | 102% | 103% |



Sales Activity by ZIP

Apr 2021

| ZIP | Pendings (Month End) | Pending Volume (Month End) | Sales | Sales Volume | Avg Sales Price | Median Sales Price | Avg Sales Price per Sq Ft | Median Sales Price per Sq Ft | Median Days In RPR |
|-------|-------------------------|-------------------------------|-------|--------------|--------------------|-----------------------|------------------------------|---------------------------------|-----------------------|
| 85087 | 19 | \$8,625,600 | 22 | \$11,258,900 | \$511,768 | \$500,500 | \$213 | \$198 | 30 |

